



This project saw us embark on a journey through the historic heart of a Lancashire farmstead, where our commitment to luxury interior design and sustainable architecture comes to life. This renovation project encapsulates our ethos, merging serene aesthetics with functional design, setting a new benchmark in guest accommodation.

In our transformative approach, the removal of the original ceiling in the guest suite introduces dramatic spatial grandeur. This decision not only elevates the architectural beauty, but also reflects our respect for the barn's historical integrity.

Adhering to our luxury design ethos, the guest suite is infused with Scandi principles – simplicity, functionality, and natural connection. We harmonise neutral shades with earthy, warm accents to craft a space that balances minimalistic elegance with inviting warmth. This

Lancashire suite becomes a sanctuary of calm, reflecting our dedication to salutogenic design in creating environments that nurture relaxation and wellbeing.

Our commitment to sustainable architecture shines in our choice of materials – each echoing environmental consciousness and superior craftsmanship. From the sustainable reclaimed wood cladding to hand-selected, artisanal furnishings, every detail is chosen for its ethical sourcing, aesthetic appeal, and contribution to the suite's tranquil ambience.

The suite showcases our skill in layering textures and colours. Each element, from plush fabrics to natural wooden finishes, is carefully curated to enhance the room's serene and welcoming atmosphere, ensuring a harmonious, tactile experience.

Our vision extends beyond mere aesthetics; we strive to create a sanctuary that offers peace and rejuvenation. Integrating Scandi design elements with our holistic approach to wellness and nature, we deliver a space that transcends traditional hospitality, offering a unique retreat for the senses.

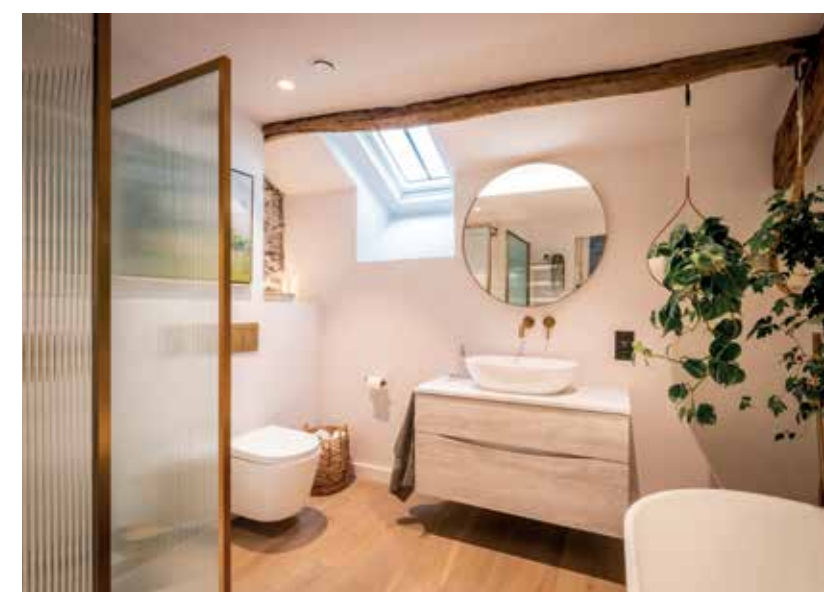
The Lancashire barn guest suite stands as a testament to our ethos – where historic charm meets contemporary luxury and sustainable design. As part of our comprehensive renovation of this historical Lancashire barn, our brief was to create a master suite that embodies tranquillity and connection to the natural world. Again, aligning with our salutogenic design principles, this space was crafted to support wellness and relaxation, tapping into the inherent restorative powers of nature.

The rebirth and vibrancy of spring greatly influenced the design of the serene master bedroom. Mirroring the rejuvenation seen in nature, we embraced the contrasting palette of vibrant greens and soft white blossoms, reflecting the purity and vitality of the season. This choice not only brings light and freshness into the space, but also maintains a calm and soothing atmosphere, fostering a deep connection with the natural environment.

Our commitment to biophilic design is evident in our choice of materials and decorative elements. Integrating a variety of natural materials and motifs, we aimed to create a sanctuary away from the demands of modern living. By incorporating elements that reflect the serene beauty of the Lancashire countryside, the master suite becomes a peaceful retreat, promoting mental and physical well-being while staying true to our ethos of sustainable luxury interior design.

By carefully blending the principles of salutogenic and biophilic design with luxurious aesthetics, this master suite stands as a testament to our commitment to creating spaces that are not only visually stunning, but also nurturing and harmonious with nature alongside actively promoting human health and having a positive impact on the planet. 1

charlottefindlater.co.uk



L A P O F L U X U R Y

Charlotte Findlater takes us behind the scenes of this project in Lancashire, where creating a bathroom sanctuary for the owners and visitors alike was a high priority